

FAVETON®

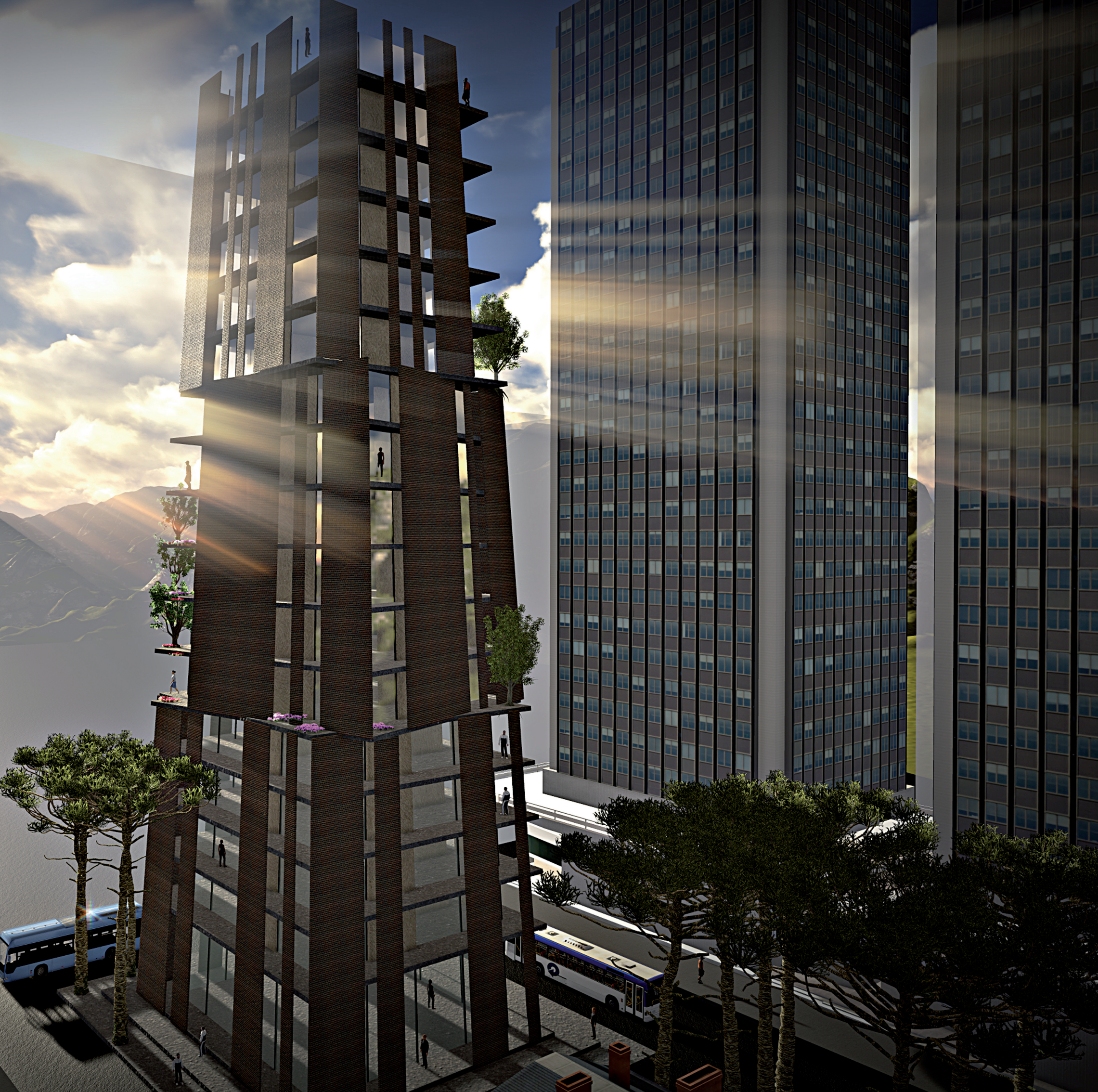
TERRACOTA

F A C A D E V E N T I L A T E D S Y S T E M



BRICK TILE SYSTEM

WWW.FAVETON.COM



INDEX

CERAMICS	04
COLORS	06
ASSEMBLY SYSTEMS	09

CONTACT.

Cra. Herrera de los Navarros, Km 1,5
50450 Muel - Zaragoza (Spain)

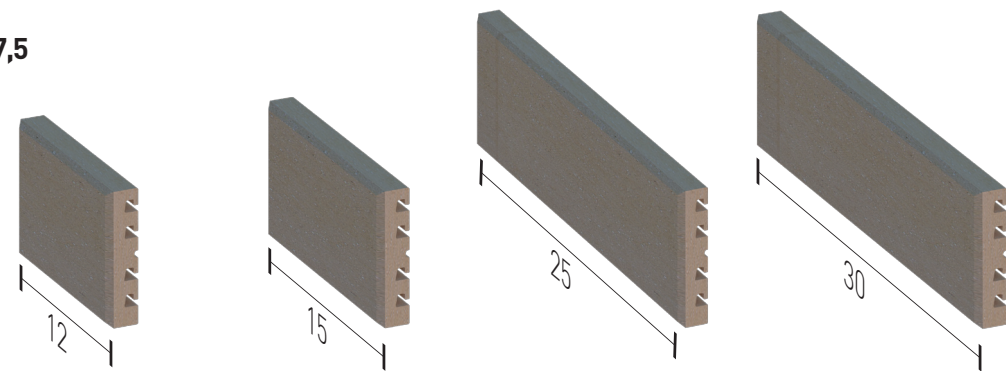
Tfno. (+34) 976 140 311
Fax. (+34) 976 141 164

info@faveton.com
www.faveton.com

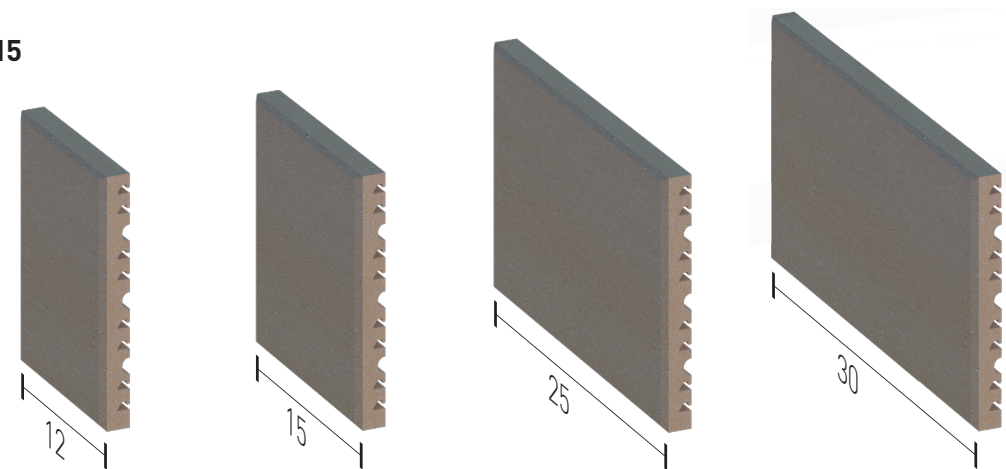
BRICK TILE

Without leaving our roots behind and because we do not forget where we belong to, a land that has been historically influenced by Mudejar art and a rich ceramic tradition, we could not either forget about culture and aesthetics found on these brick façade. FAVETON launches onto the market a new system of ventilated façades using brick tiles.

BRICK TILE 7,5

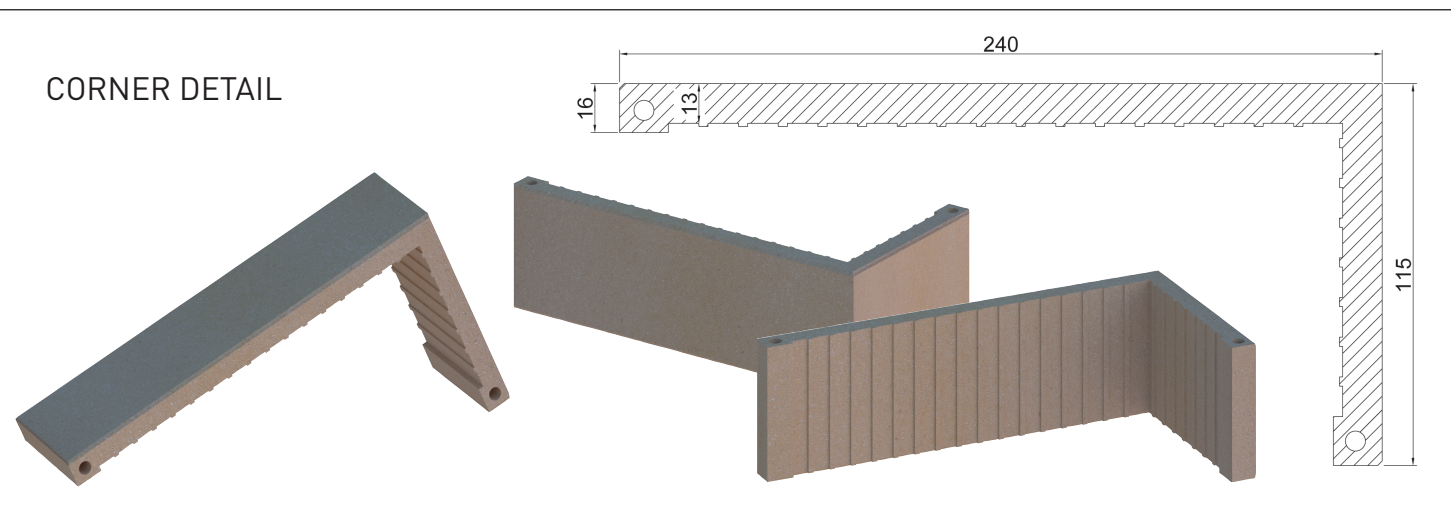


BRICK TILE 15



FAVETON OFFERS DIFFERENT MEASUREMENTS MADE TO ORDER.

CORNER DETAIL



SECTION	MEASUREMENTS			WEIGHT/m ²	UNIT / m ²	UNIT/PACK	PACK / m ²	PALLET / m ²
	L	W	T					
	30	7,5	1,6	28	40	28	0,7	32
	25	7,5	1,6	28	47	34	0,7	32
	15	7,5	1,6	28	78	56	0,7	32
	12	7,5	1,6	28	90	68	0,7	32
	30	15	1,6	28	20	14	0,7	32
	25	15	1,6	28	24	17	0,7	32
	15	15	1,6	28	42	28	0,7	32
	12	15	1,6	28	48	34	0,7	32

TABLE OF PROPERTIES.

PROPERTIES	RULE	FAVETON VALUES	
Tolerances.	ISO 10545-2	- Length (Extrusion Direction)	+/- 4 mm*
		- Height	+/- 3 mm*
		- Thickness	+/- 15% *
		- Straightness (Extrusion Direction)	+/- 0,5% of length
		- Rectangulativity	+/- 2% of length
		- Surface flatness of diagonal or height	+/- 1%
[*] According to dimensions of format.			
Water absorption.	ISO 10545-3	3-6% depending on color	
Bending strength.	ISO 10545-4	14-18 N/mm ² depending on color	
Linear thermal expansion.	ISO 10545-8	Coefficient of expansion 5,7 x 10 ⁻⁶ (K ⁻¹). Test ITC.	
Resistance to thermal shock.	ISO 10545-9	Unalterable up to 145°C, according to test.	
Moisture expansion.	ISO 10545-10	Mean value <0,1 mm/m, maximum value <0,1 mm/m. Test ITC	
Frost resistance.	ISO 10545-12	Unalterable according to test (100 cycles + 5°C a -5°C).	
Chemical resistance.	ISO 10545-13	Only applicable in corrosive conditions. At least G and B class.	
Stain resistance.	ISO 10545-14	At least CLASS 3. (Enamelled)	
Enamelled.		BRICK TILE.	





BS 05 ENAMELLED



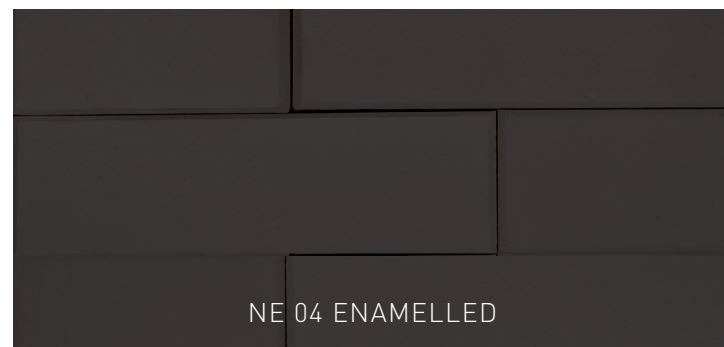
BS 07 ENAMELLED



ME SILVER ENAMELLED



ME N ENAMELLED

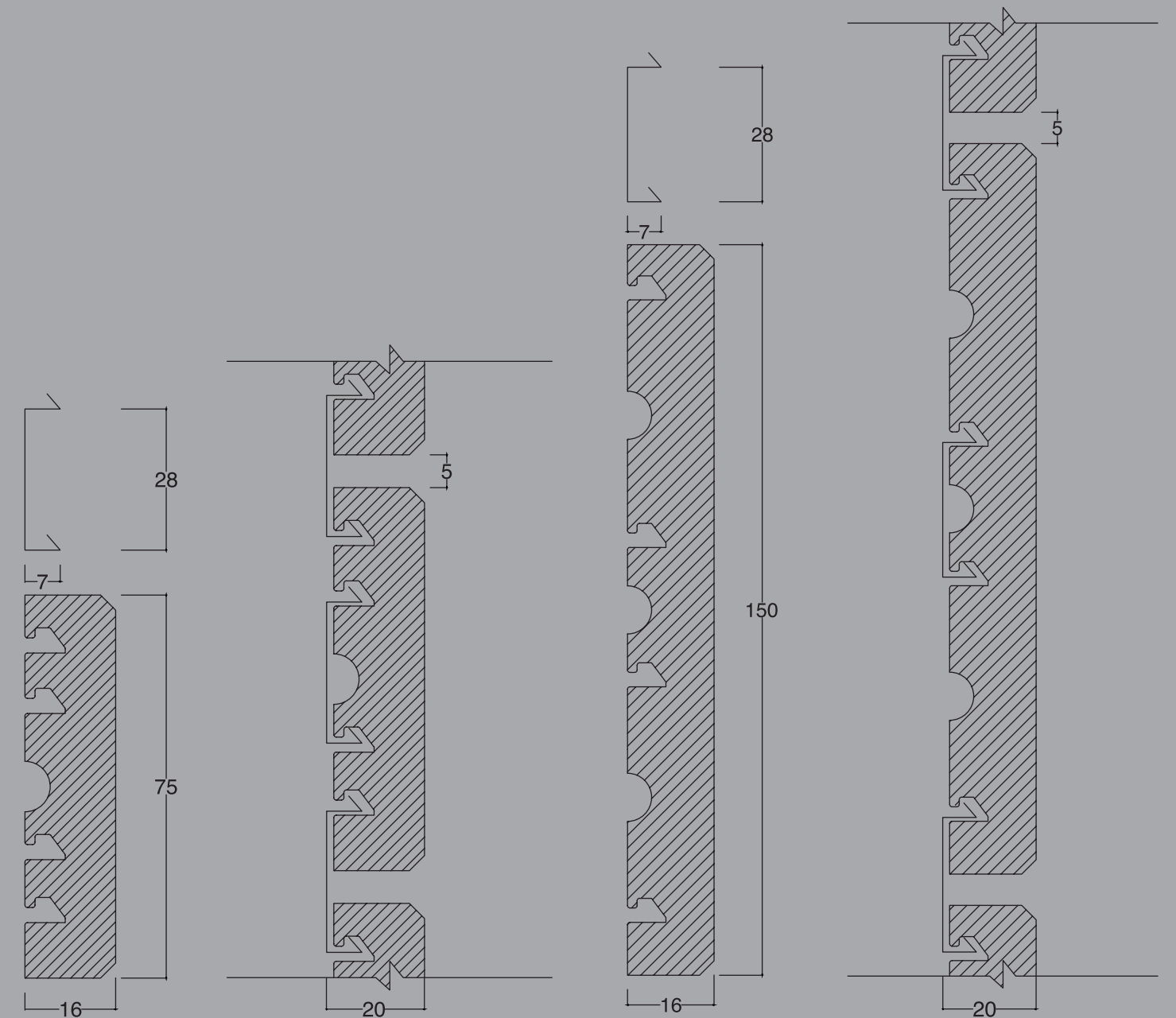


NE 04 ENAMELLED



ME COPPER ENAMELLED

ASSEMBLY SYSTEMS



The ceramic tiles's distinctive design and their profile allow the production of different joints and ways to place the facade.

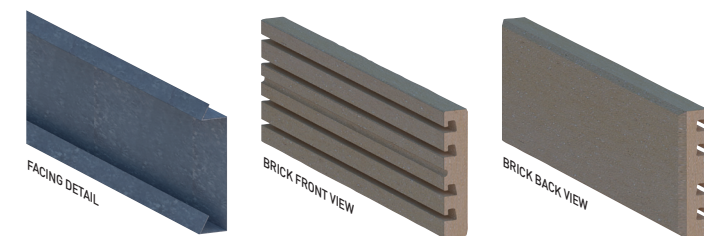
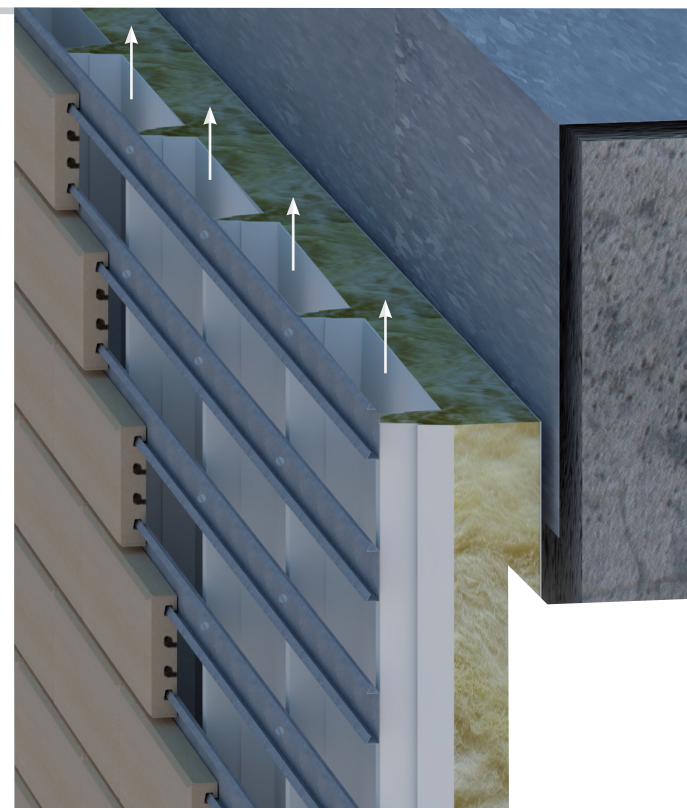
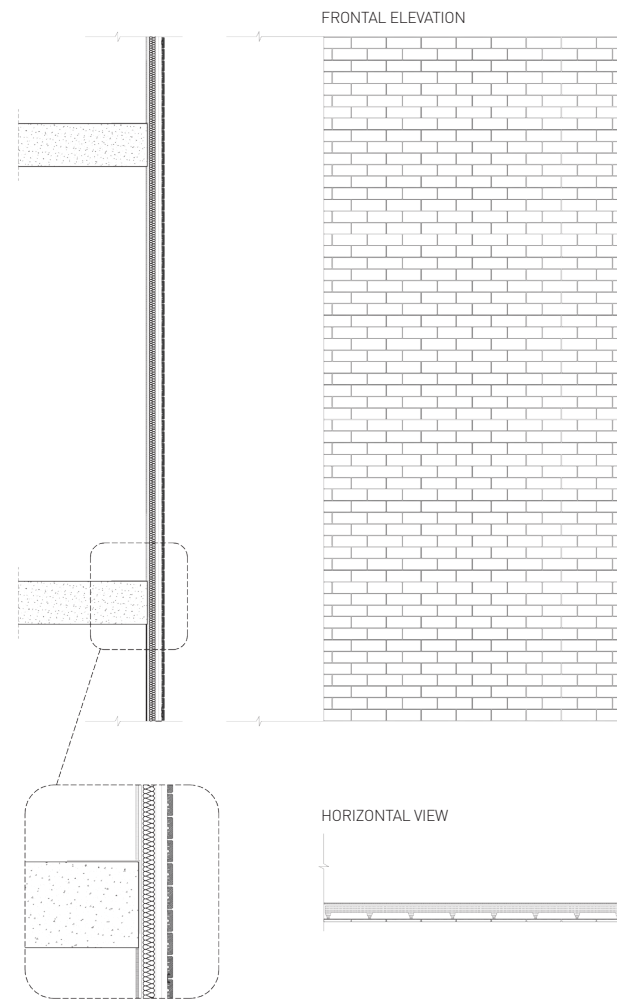
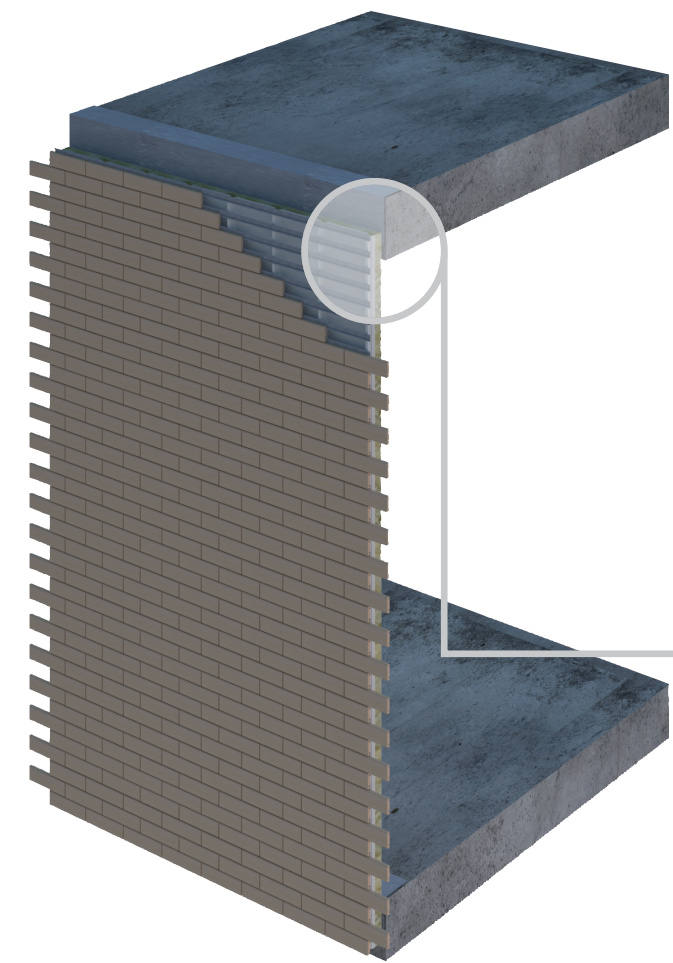
The joints can be left open in order to get proper ventilation or, on the other hand, they can be filled and sealed with filler made for this specific purpose.



FAVETON PREPARES ANY COLOUR YOU MAY WANT BY REQUEST AS LONG AS THERE IS A MINIMUM VOLUME OF PRODUCTION. IT WILL TAKE AN ADDITIONAL CHARGE FOR SPECIFICALLY MADE COLOURS.

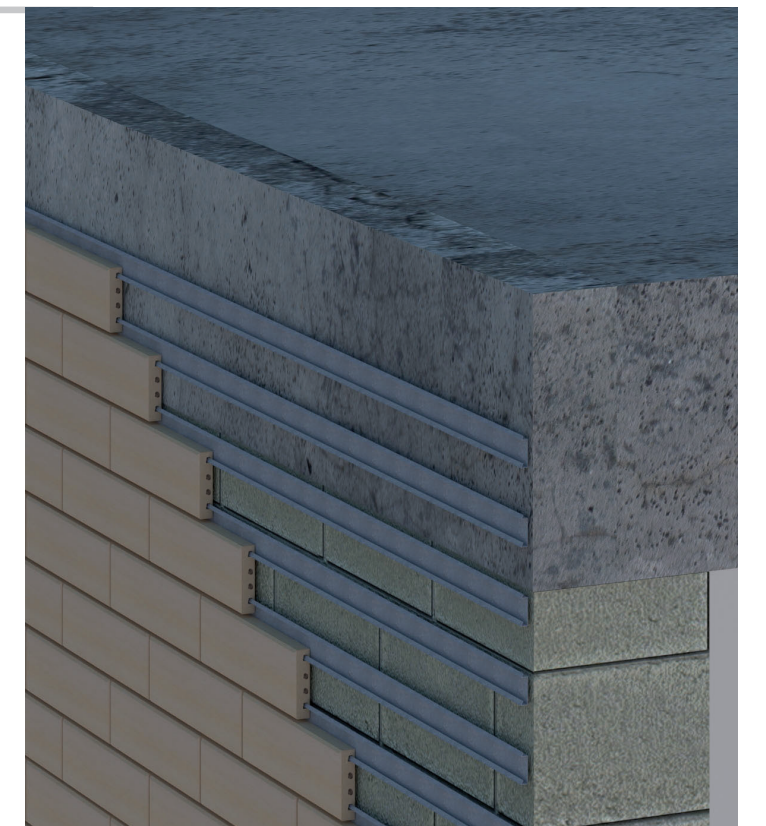
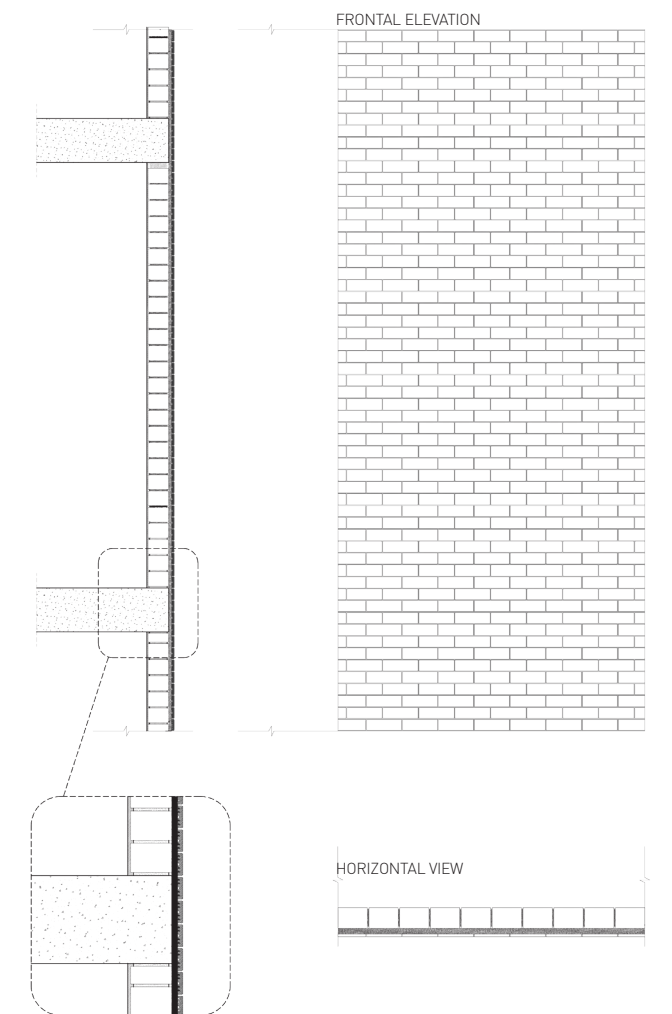
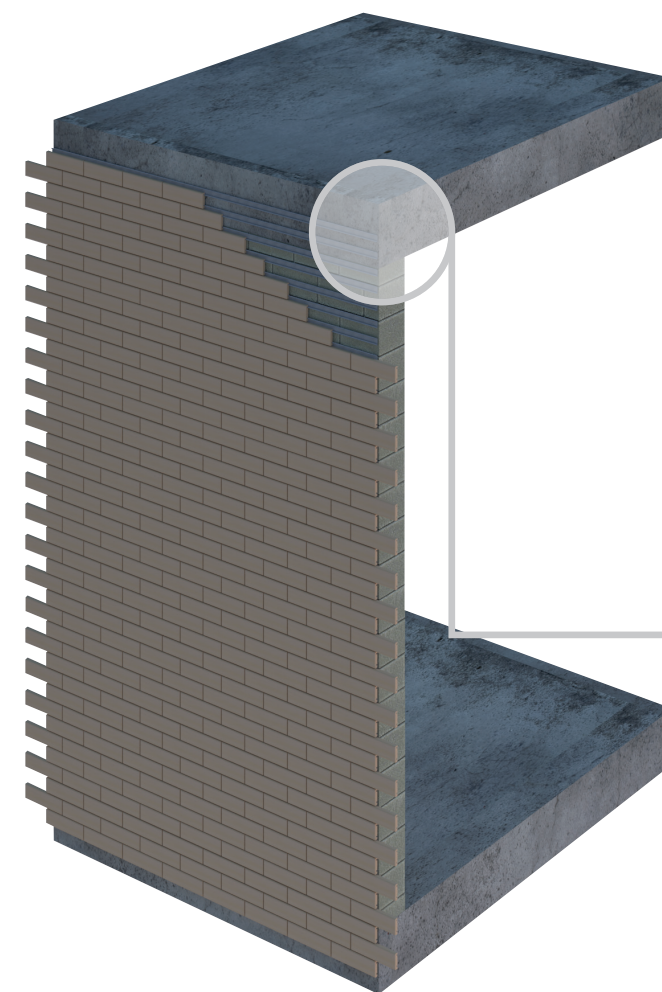
VENTILATION SYSTEM

A ribbed panel composes these ventilation systems or sandwich panel that function as main and blocking sheet. Purlins are attached to this sheet and support the FAVETON ceramic tile. The distance between the panel's ribbed sections allows vertical ventilation of the façade.



MECHANICAL ATTACHMENT

Purlins compose this system. These purlins are directly attached to the surface and insulation wall over which FAVETON face tile is set.



GLUING SYSTEM

This is a traditional gluing system. We take into account the kind of glue, ensuring it is valid either for ceramic products and the surface over which we are applying it.

